



## Netheravon Road, London, W4 2NB

A nicely presented one-bedroomed garden flat situated in the very popular residential road in the heart of Chiswick within a short walk of the extensive boutique shopping and restaurant facilities of Chiswick's main thoroughfare. The accommodation provides: large front living room, kitchen, rear large double bedroom, bathroom, under stairs storage, west facing rear garden, gas fired central heating, storage. Local transport links include both Turnham Green & Stamford brook tube stations, numerous local bus routes with convenient vehicular access via A4/M4 Central London, Heathrow & The West. Hounslow Council Band D. EPC-E. The property is available 1st April and offered unfurnished

- Lovely residential area
- Great for transport links
- Presented in nice condition
- Spacious reception room
- Large double bedroom
- Kitchen
- Bathroom
- West facing garden
- Side access
- Available 1st April, unfurnished

**£1,950 Per Calendar Month**

# Netheravon Road, W4

Approximate gross internal area

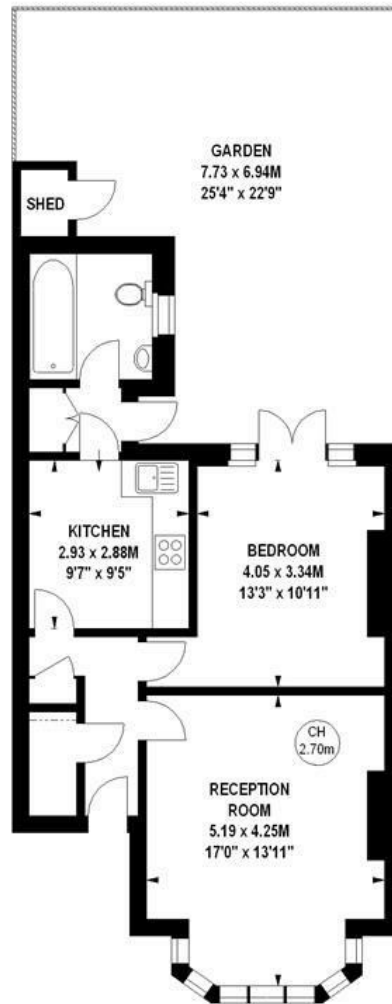
58.53 sq m / 630 sq ft

(Excluding Shed)

Shed

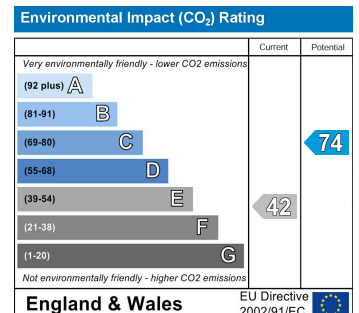
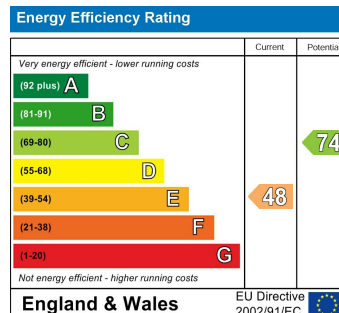
1.02 sq m / 11 sq ft

Key :  
CH - Ceiling Height



## Ground Floor

The floor plan is not to scale and measurements and areas shown are approximate and therefore should be used for illustrative purposes only. The plan has been prepared in accordance with the RICS code of Measuring Practice and whilst we have confidence in the information produced, it must not be relied on. If there is any aspect of particular importance, you should carry out or commission your own inspection of the property.  
Copyright of FeaturePRO.



5-7 Turnham Green Terrace, Chiswick, London, W4 1RG

Tel 020 8747 8800

E-mail [lettings@whitmanandco.com](mailto:lettings@whitmanandco.com)

Website [www.whitmanandco.com](http://www.whitmanandco.com)

PrimeLocation.com

Zoopla.co.uk

rightmove

OnTheMarket.com

MISREPRESENTATION ACT 1967

Whitman & Co. for themselves and for the vendors give notice that these particulars do not constitute any part of, an offer of contract. All statements contained in these particulars are made without responsibility on the part of Whitman & Co. or the vendor. None of the statements contained in these particulars is to be relied upon as statements or representations of facts. Any intending purchaser must satisfy himself by inspection or otherwise as to the correctness of each of the statements contained in these particulars. The vendor does not make or give, and neither Whitman & Co. or any person in their employment has any authority to make or give, any representation or warranty whatever in relation to the property.